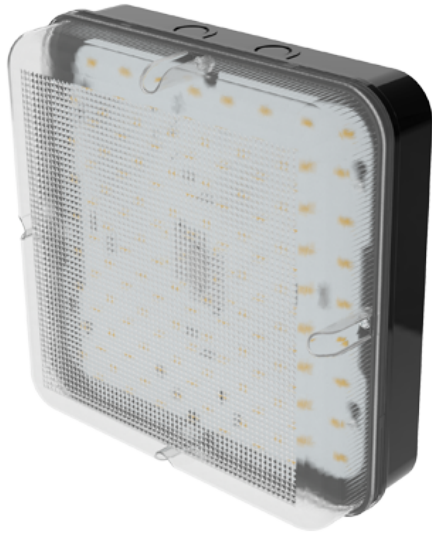


### Order Code: XCBHBPX1MS

X1 Bulkhead WP - Square - Prismatic diffuser - CCT [3000K/4000K/6000K] + Wattage Selectable - Black - Microwave sensor



#### Features

- Suitable for exterior commercial and industrial applications
- CCT adjustable via selector switch [3000K/4000K/6000K]
- Wattage adjustable via selector switch [8W/12W/16W]

#### Construction

- Modular [emergency](#) and [microwave sensor](#)'s available for quick and easy conversion of a standard fitting
- For additional control, please use [X1 Bulkhead Remote](#) [Sold Separately]

#### Installation Notes

4-point screw fixing  
 Conduit side entry points for surface mount cable entry  
 Loop-in, loop-out push-fit terminal block for quick tool-free installation



#### Technical Data

General		Electrical	
Luminaire Wattage (W)	8W/12W/16W	Rated Input Current (A)	0.04 to 0.07
Weight (kg)	0.72	Power Factor (pf)	0.82 to 0.92
Operating Temperature (ta °C)	0° to 25°	Input Voltage Range (VAC)	198 to 264
		Inrush Current Peak (A)	18.4
Light Output		Surge Protection (kV)	1
Lumens (lm)	1200 to 2000	Conductor Size (mm)	0.5 to 2.5
Efficacy (lm/W)	153	Terminal Type	4 pole piano key
LED			
CCT (K)	3000K/4000K/6000K		
CRI	80		
Macadam Ellipses	0.4 to 0.8		
Driver			
Driver Current (mA)	140/215/280		
Forward Voltage (V)	48.5 to 52.5		

**Order Code: XCBHBPX1MS**

X1 Bulkhead WP - Square - Prismatic diffuser - CCT [3000K/4000K/6000K] + Wattage Selectable - Black - Microwave sensor

Dimensions

A (mm)	252
B (mm)	252
C (mm)	92

Line Drawing

