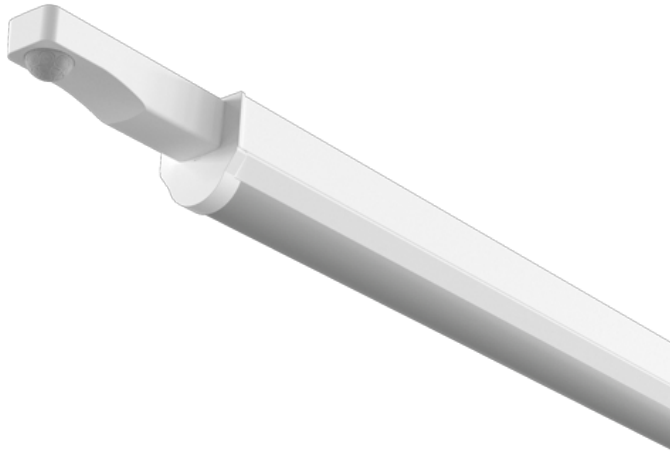


Order Code: XCBT6X1P

X1 Batten - 1800mm - CCT [3000K/4000K/6000K] + Wattage Selectable - Batten fit PIR



Features

- Ideal for replacement of linear fluorescent fixtures
- Suitable for general domestic and commercial use
- CCT adjustable via selector switch [3000K/4000K/6000K]
- Batten fit PIR option available, compatible with [V2P Remote](#)

Construction

- Slimline steel body finished in white (RAL 9016)
- High quality opal diffuser to reduce glare
- Loop in/out mains connector
- Conduit and BESA fixing points for end or rear cable entry
- Factory presets set at:
10 minute off delay
Lux disabled

Installation Notes

Centrally-mounted loop-in, loop-out push fit terminal block



Technical Data

General		Electrical	
Luminaire Wattage (W)	34W/42W/51W/60W	Rated Input Current (A)	0.28
Weight (kg)	1.85	Power Factor (pf)	0.91 to 0.96
Operating Temperature (ta °C)	45	Input Voltage Range (VAC)	220 to 240
		Inrush Current Peak (A)	200
Light Output		Surge Protection (kV)	L-N 1KV, LN-PG 2KV
Lumens (lm)	4700 to 8600	Conductor Size (mm)	0.5 to 2.5
Efficacy (lm/W)	150	Terminal Type	3 pole piano key
LED			
CCT (K)	3000K/4000K/6000K		
CRI	85		
Macadam Elipses	5		
Driver			
Driver Current (mA)	200 , 250 , 300 , 350		
Forward Voltage (V)	80 to 172		
Emergency			
Emergency Lumen Operating	300		
Emergency Wattage (W)	2		

Order Code: XCBT6X1P

X1 Batten - 1800mm - CCT [3000K/4000K/6000K] + Wattage Selectable - Batten fit PIR

Dimensions

A (mm)	1921
B (mm)	55
C (mm)	58
Fix	610

Line Drawing

